

LHBT/R or S SERIES

High Lumen Industrial High-Bay LED Luminaire Diffuser Enclosed LED Design

Fixture Type: _____

Job Information: _____

SPECIFICATIONS:

LED MODULES:

- High performance linear configured LED module boards.
- Each board consists of multiple mid-power, high efficacy LEDs in a precise layout eliminating the need for supplemental heat sinking.
- The boards produce an even and diffuse light which maximizes optical efficiency.
- Compatible with the dimming performance of the LED driver.
- Color temperatures available: 3500K, 4000K and 5000K.

LED DRIVERS:

- Factory programmable constant current LED power supply.
- Multiple standard drive current outputs (factory set by Mercury) are cataloged with their corresponding lumen package offerings. Upon request, custom drive current outputs and lumen packages are available.
- Note: Certain cataloged lumen packages may be provided with a non-programmable constant current LED power supply at Mercury's discretion. Contact factory if critical.
- Universal voltage input, 120V-277V, 50HZ-60HZ.
- Specification grade dimming down to 1% on 0-10V dimming controls.
- Optional 480V available on request.

LED LUMEN PACKAGES:

- Cataloged standard lumen packages. See attached chart for full details.
- Custom lumen packages pre-set are optional with programmable drivers only. Contact factory for details.

HOUSING:

- Fabricated from heavy gauge code grade cold rolled steel with parts securely held into place with a combination of rivets and screws.
- Vented housing for additional heat management.
- White polyester powder coating finish on all parts for long lasting durability.
- Sufficient electrical knockouts are provided on the housing back and ends.
- Wiring access plate on back for easy installations.

DIFFUSERS:

- Twin linear diffusers extruded from custom formulated high transmission acrylic material.
- Architecturally-curved or squared profiles as specified.
- Linear ribbing for high LED performance.

INSTALLATIONS AND OPTIONS:

- Intended to be suspended on aircraft cable, chain or stems. Cataloged on accessory matrix.
- Optional top mounting box accepts a single stem, conduit, pipe, or add additional locking-hook to box which accepts chain.
- Optional wired-in flex, cord and plug sets, and twist-lock plug sets.

STANDBY LIGHTING OPTION:

- Self-contained module, 10W or 12W as specified. Mounts on top of housing. Battery backup upon loss of power.

OPTIONAL OCCUPANCY SENSOR:

- Self-contained sensor (Leviton #OSFHU or equal) mounts directly to luminaire.
- Passive infrared (PIF) technology for individual luminaire control.
- Reliable coverage up to 40Ft. height.
- Interchangeable lenses for 360 degree or aisle way pattern.

OPTIONAL ACCESSORY EQUIPMENT:

- 11GA. wire guard to protect LED modules. White or chrome finish.

CERTIFICATE OF SAFETY

COMPLIANCE AND LISTINGS:

- Luminaire: UL and CUL listed 1598 and bears their label. Suitable for damp locations.
- DesignLights Consortium (DLC) qualified product. Not all versions of this product may be DLC qualified. Check at www.designlights.org/QPL to confirm.

WARRANTY:

- 5-year limited warranty is standard. Special 10-year warranty available on a job-to-job basis. Complete LED warranty terms available at www.mercltg.com.
- Actual performance may differ as a result of end-user environment and application.
- LED luminaire is suitable to operate in ambient temperatures from -40C (-40F) to 40C (104F).
- The following exclusions apply: Luminaires with standby lighting options, integral lighting controls options, or wireless control options. Consult factory.

FEATURES:

- High-Bay style linear ambient LED luminaire.
- Performance designed for very high lumen packages.
- Intended for the higher ceilings found in industrial locations as well as warehouses, big box retailing and gymnasiums.
- Ultra-thin thermally designed full body style housing.
- Enclosed LED design features twin high transmission acrylic diffusers which protect the LED modules. Also provides a softer, more visually comfortable illuminated luminaire along with a wider distribution pattern.
- Select R style for the rounded diffusers, select S style for the square diffusers.
- Standard nominal lumen packages cataloged for a 24" length or a 46" length module.
- Other lumen packages upon request.
- Digital LED technology provides high efficacy and energy efficiency.
- No maintenance required as High Bay LED luminaires require no re-lamping efforts. Extremely important with intended mounting heights up to 35 feet.
- Lumen maintenance; Reported L70 (hours) & L80 (hours) > 60,000.
- CRI greater than 80.
- Fixture lumens per watt ratios up to 117.
- For new installations or direct replacement for older HID or fluorescent luminaires.
- American Made.



LHBT/R or S SERIES

Fixture Type:

Job Information:

ORDERING DATA: Fill in boxes below with corresponding bold options.

Example: LHBT-4-28000HL-40K-R-1%-UNI

SERIES	NOMINAL LENGTH (FT)	NOMINAL LUMENS	COLOR TEMP	DIFFUSER STYLE	DRIVER INFO	VOLTAGE	OPTIONS
LHBT	2 24" Length 4 46" Length	24"L 12000 12000HL 16000 16000HL 46"L 12000HL 16000 16000HL 18000 18000HL 20000 20000HL 24000 24000HL 28000 28000HL 30000 30000HL 32000 32000HL	35K 40K 50K	R Round Profile S Square Profile	1% 0-10V 1% Dimming As Specified	UNI	MB Mounting Box, For Stem, Conduit, Pipe. MBH Mounting Box with Locking-Hook, For Chain. 01 Leviton OSFHU or equal Occupancy Sensor, 360 Degree Lens Inst. Aisle Pattern Incl. 18/3CP 120V 18/3 SJT Cord & Plug Set/ Others on Request. 16/3CTP 120V 16/3 SJT Cord & NEMA L5-15P Twist-Lock Plug Set/ Others on Request. 277V-16/3CTP 277V 16/3 SJT Cord & NEMA L7-15P Twist-Lock Plug Set/ Others on Request. Standby Modules EM10 EM12

HANGING ACCESSORIES

PART #	DESCRIPTION
CH-18	Y-Shaped 18"L Cable/ Paddle Hanger.
ACXX	Aircraft Cable/ XX= 48"L, 96"L, 150"L
VH-XX	"V" Hanger w/XX= 48"L or 72"L Chain & "S" Hook

Other lengths available.

ACCESSORIES

PART #	DESCRIPTION
WG-LHBT-2-X	11GA. Wire Guard 24"L, X= W-White C-Chrome Finish.
WG-LHBT-4-X	11GA. Wire Guard 46"L, X= W-White C-Chrome Finish.

PHOTOMETRICS:

All photometric reports are available at www.mercltg.com.

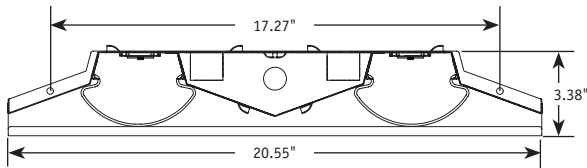
CROSS SECTION:



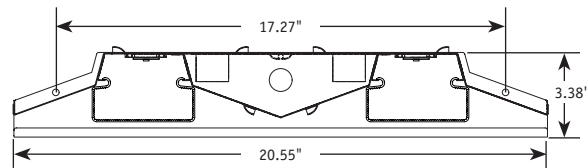
LHBT SERIES - R STYLE



LHBT SERIES - S STYLE



LHBT SERIES - R STYLE



LHBT SERIES - S STYLE

LHBT/R or S SERIES

Fixture Type:

Job Information:

LUMEN PACKAGE:

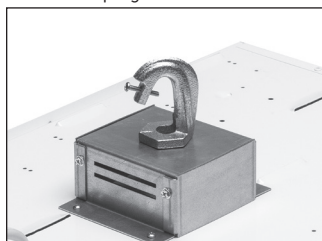
SERIES	NOMINAL LENGTH (FT)	Nominal Lumen Package	Color	Fixture Power (W)	Delivered Lumens	Fixture LPW	DLC
LHBT	2						
		12,000	35K/40K/50K	94.7W	10,377	110	—
		12,000HL	35K/40K/50K	111.4W	12,111	109	✓
		16,000	35K/40K/50K	127.7W	13,896	109	—
		16,000HL	35K/40K/50K	149.5W	16,032	107	✓

SERIES	NOMINAL LENGTH (FT)	Nominal Lumen Package	Color	Fixture Power (W)	Delivered Lumens	Fixture LPW	DLC
LHBT	4						
		12000HL	35K	104.8W	11,730	111	✓
		12000HL	40K	104.8W	11,960	114	✓
		12000HL	50K	104.8W	12,080	115	✓
		16,000	35K/40K/50K	121.1W	13,890	115	—
		16,000HL	35K/40K/50K	141.8W	16,115	114	✓
		18,000	35K/40K/50K	136.2W	15,515	114	—
		18,000HL	35K/40K/50K	160.9W	18,078	112	✓
		20,000	35K/40K/50K	153.1W	17,295	113	—
		20,000HL	35K/40K/50K	170.5W	19,876	117	✓
		24,000	35K/40K/50K	196.3W	20,738	106	—
		24,000HL	35K/40K/50K	222.8W	24,222	109	✓
		28,000	35K/40K/50K	222.8W	24,222	109	—
		28,000HL	35K/40K/50K	253.2W	27,286	108	✓
		30,000	35K/40K/50K	238W	25,790	108	—
		30,000HL	35K/40K/50K	280.8W	30,305	108	—
		32,000	35K/40K/50K	253.2W	27,286	108	—
		32,000HL	35K/40K/50K	299W	32,064	107	✓

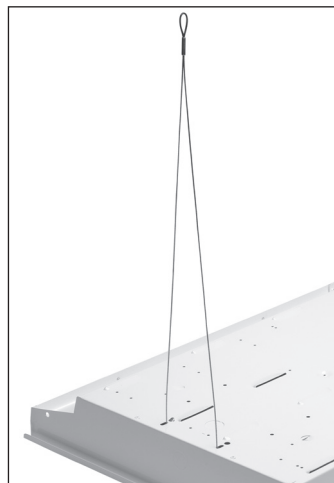
Actual wattage may differ by +/- 5% when operating between 120V-277V +/- 10%.



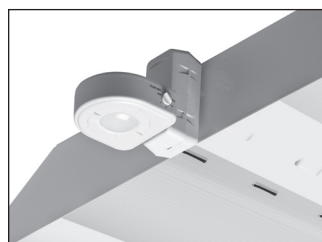
Twist lock plug set



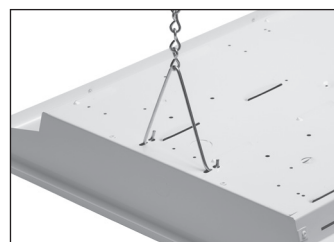
Mounting Box, shown with additional locking-hook



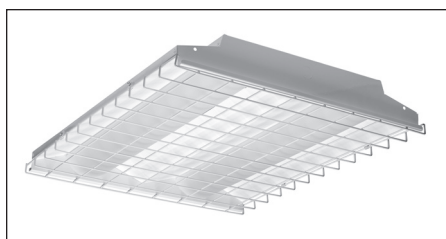
Y shaped cable



Sensor Detail, Levitan OSFHU



V Hanger w/chain



Wireguard shown on 24" luminaire