



# LR10 SERIES

## Architectural Recessed 2X4 LED Volume Luminaire

Fixture Type: \_\_\_\_\_

Job Information: \_\_\_\_\_

### SPECIFICATIONS:

#### LED MODULES:

- High performance linear configured LED module boards.
- Each board consists of multiple mid-power, high efficacy LEDs in a precise layout eliminating the need for supplemental heat sinking.
- The boards produce an even and diffuse light which maximizes optical efficiency.
- Compatible with the dimming performance of the LED driver.
- Color temperatures available: 3000K, 3500K and 4000K.
- Upon request: 5000K.

#### LED DRIVERS:

- Factory programmable constant current LED power supply.
- Multiple standard drive current outputs (factory set by Mercury) are cataloged with their corresponding lumen package offerings. Upon request, custom drive current outputs and lumen packages are available.
- Note: Certain cataloged lumen packages may be provided with a non-programmable constant current LED power supply at Mercury's discretion. Contact factory if critical.
- Universal voltage input, 120V-277V, 50HZ-60HZ.
- Specification grade dimming down to 1% on 0-10V dimming controls.

#### LED LUMEN PACKAGES:

- Cataloged standard lumen packages. See attached chart for full details.
- Custom lumen packages pre-set are optional with programmable drivers only. Contact factory for details.

#### HOUSING:

- All metal parts are fabricated in a computer-controlled operation from heavy gauge code grade cold rolled steel.
- Rivets hold all parts together for strength and unity.
- A custom formulated non-glare white powder coating is applied to the housing after fabrication providing a reflectivity of at least 90%.

#### DIFFUSER:

- Small-scale tear drop profile design.
- Extruded from custom formulated high transmission acrylic material.
- Linear ribbing for high LED performance.

#### STANDBY LIGHTING OPTION:

- Self contained module, 5W, 7W, 10W or 12W as specified. Battery backup upon loss of power.
- May not be available with some higher lumen packages. See Lumen package matrix.

#### INSTALLATIONS:

- Designed for installation into NEMA Type G lay-in acoustical grid ceiling systems, 1" grid or 9/16" fine-line grid.
- For NEMA Type F dry wall applications an additional flange kit must be used with Type G housing.
- Four pry-out style grid support clips are located on the housing sides.
- Four auxiliary suspension points are also provided for securing to building structure.
- A quick wiring access plate is located on back of the housing. Additional knockouts provided.
- Factory installed power whips as specified.

#### CERTIFICATE OF SAFETY COMPLIANCE AND LISTINGS:

- Luminaire: UL and CUL listed 1598 and bears their label. Suitable for damp locations.
- IC rated. (Some higher lumen packages may not qualify. See Lumen Package matrix).
- DesignLights Consortium (DLC) qualified product. Not all versions of this product may be DLC qualified. Check at [www.designlights.org/QPL](http://www.designlights.org/QPL) to confirm.

#### WARRANTY:

- 5-year limited warranty is standard. Special 10-year warranty available on a job-to-job basis. Complete LED warranty terms available at [www.mercltg.com](http://www.mercltg.com).
- Actual performance may differ as a result of end-user environment and application.
- Most LED luminaires are suitable to operate in ambient temperatures from -20C (-4F) to 25C (77F).
- The following exclusions apply: Luminaires with optional standby lighting option, integral lighting controls options, or wireless control options. Consult factory.
- LM-79 testing was measured under a controlled 25C (77F) ambient operating temperature.

### FEATURES:

- Shallow recessed 2X4 ambient LED luminaire featuring a single linear high transmission acrylic diffuser.
- Small-scale tear drop diffuser envelopes the LED light source allowing maximum light transmission while eliminating pixillations and hot spots.
- Delivers a balanced amount of horizontal and vertical illumination.
- Digital LED technology provides high efficacy and energy efficiency.
- Multiple power and light levels are offered as standard to allow meeting design and energy needs per application. Custom factory set levels available on request.
- Lumen maintenance; Reported L70 (hours) & L80 (hours) > 60,000.
- CRI greater than 80.
- Fixture lumens per watt ratios up to 125.
- American Made.
- Matching surface luminaire: LW10 Series.



## LR10 SERIES

Fixture Type:

Job Information:

**ORDERING DATA:** Fill in boxes below with corresponding bold options.

Example: LR10-24G-6400-35K-1%-UNI-EM7

SERIES	MODULE SIZE/CEILING	NOMINAL LUMENS	COLOR TEMP	DRIVER	VOLTAGE	STANDBY LIGHTING OPTIONS	OPTIONS
LR10	24G 2X4 Module/ Nema Type G/Lay-In Grid, 1" or 9/16" Fine Line.	3300 3800 4200 4500 5000 6400 7300  XXXX Custom Lumen Package. Contact Factory.	30K 35K 40K 50K Upon Request	1% 0-10V 1% Dimming  As Specified	UNI	EM5 EM7 EM10 EM12	FLX 6Ft. Single Circuit Power Flex (Specify Voltage)  FLX2 6Ft. 2-Circuit Power Flex (Specify Voltage)

### LUMEN PACKAGE

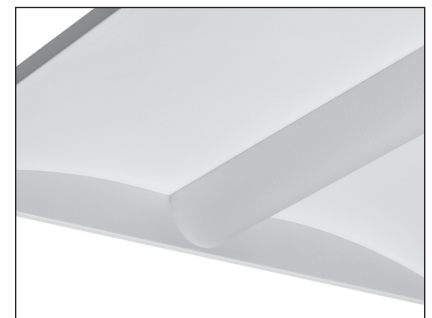
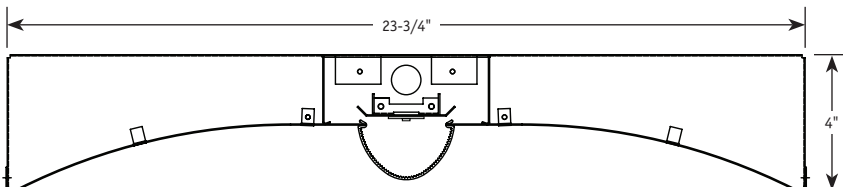
SERIES	MODULE SIZE	Nominal Lumen Package	Color	Fixture Power (W)	Delivered Lumens	Fixture LPW	IC Rated	Standby Lighting Option	DLC Listed
LR10	2X4								
		3300	3000K	28	3203	116	✓	✓	-
		3300	3500K	28	3253	118	✓	✓	-
		3300	4000K	28	3354	121	✓	✓	✓
		3300	5000K	28	3455	125	✓	✓	✓
		3800	3000K	32	3634	113	✓	✓	✓
		3800	3500K	32	3691	115	✓	✓	✓
		3800	4000K	32	3805	119	✓	✓	✓
		3800	5000K	32	3919	122	✓	✓	✓
		4200	3000K	37	4055	111	✓	✓	✓
		4200	3500K	37	4119	113	✓	✓	✓
		4200	4000K	37	4247	116	✓	✓	✓
		4200	5000K	37	4374	120	✓	✓	✓
		4500	3000K	40	4362	109	✓	✓	✓
		4500	3500K	40	4431	111	✓	✓	✓
		4500	4000K	40	4568	114	✓	✓	✓
		4500	5000K	40	4705	118	✓	✓	✓
		5000	3000K	45	4821	107	✓	✓	✓
		5000	3500K	45	4897	108	✓	✓	✓
		5000	4000K	45	5048	112	✓	✓	✓
		5000	5000K	45	5200	115	✓	✓	✓
		6400	3000K	57	6128	107	-	✓	-
		6400	3500K	57	6224	109	-	✓	✓
		6400	4000K	57	6416	112	-	✓	✓
		6400	5000K	57	6609	115	-	✓	✓
		7300	3000K	61	6940	114	-	✓	-
		7300	3500K	61	7014	115	-	✓	-
		7300	4000K	61	7309	120	-	✓	-
		7300	5000K	61	7383	121	-	✓	-

Actual wattage may differ by +/- 5% when operating between 120V-277V +/- 10%.

### PHOTOMETRICS:

All photometric reports are available at [www.mercltq.com](http://www.mercltq.com).

### CROSS SECTIONS:



Detail

