



# LW104 SERIES

## Linear Ambient/Utility LED Luminaire

Fixture Type: \_\_\_\_\_

Job Information: \_\_\_\_\_  
\_\_\_\_\_  
\_\_\_\_\_

### SPECIFICATIONS:

#### LED MODULES:

- High performance linear configured LED module boards.
- Each board consists of multiple mid-power, high efficacy LEDs in a precise layout eliminating the need for supplemental heat sinking.
- The boards produce an even and diffuse light which maximizes optical efficiency.
- Compatible with the dimming performance of the LED driver.
- Color temperatures available: 3000K, 3500K and 4000K.
- Upon request: 5000K.

#### LED DRIVERS:

- Factory programmable constant current LED power supply.
- Multiple standard drive current outputs (factory set by Mercury) are cataloged with their corresponding lumen package offerings. Upon request, custom drive current outputs and lumen packages are available.
- Note: Certain cataloged lumen packages may be provided with a non-programmable constant current LED power supply at Mercury's discretion. Contact factory if critical.
- Universal voltage input, 120V-277V, 50HZ-60HZ.
- Specification grade dimming down to 1% on 0-10V dimming controls.

#### LED LUMEN PACKAGES:

- Cataloged standard lumen packages. See attached chart for full details.
- Custom lumen packages pre-set are optional with programmable drivers only. Contact factory for details.

#### HOUSING:

- Fabricated from heavy gauge code grade cold rolled steel.
- White painted finish for long lasting durability.
- Housing ends are riveted into place.
- Sufficient electrical knockouts are provided on the housing back and ends.

#### DIFFUSER:

- Low profile clear acrylic diffuser. Conical prisms along the bottom panel. Linear prisms along the side panels.

#### STANDBY LIGHTING OPTION:

- Self-contained module, 7W, 10W or 12W as specified. Battery backup upon loss of power.

#### OPTIONAL OCCUPANCY SENSOR:

- Self-contained sensor (Leviton #OSFHU or equal) mounts directly to luminaire.
- Passive infrared (PIF) technology for individual luminaire control.
- Reliable coverage up to 40Ft. height.
- Interchangeable lenses for 360 degree or aisle way pattern.

#### INSTALLATIONS:

- Suitable for surface mounting or suspending from ceiling orientations only.
- Mount individually or in continuous run applications.
- End knockouts for surface conduit entry.

#### CERTIFICATE OF SAFETY

#### COMPLIANCE AND LISTINGS:

- Luminaire: UL and CUL listed 1598 and bears their label. Suitable for damp locations.

#### WARRANTY:

- 5-year limited warranty is standard. Complete LED warranty terms available at [www.mercltg.com](http://www.mercltg.com).
- Actual performance may differ as a result of end-user environment and application.
- Most LED luminaires are suitable to operate in ambient temperatures from -20C (-4F) to 25C (77F).
- The following exclusions apply: Luminaires with optional standby lighting option, integral lighting controls options, or wireless options. Consult factory.
- LM-79 testing was measured under a controlled 25C (77F) ambient operating temperature.

### FEATURES:

- Shallow and compact designed linear ambient/utility LED luminaire.
- Low profile clear acrylic prismatic diffuser surrounds the LED light source enabling a wide and consistent light distribution.
- Available in 2Ft., 4Ft. or 8Ft. modules
- Digital LED technology provides high efficacy and energy efficiency.
- Multiple power and light levels are offered as standard to allow meeting design and energy needs per application. Custom factory set levels available on request.
- Lumen maintenance; Reported L70 (hours) & L80 (hours) > 60,000.
- CRI greater than 80.
- Fixture lumens per watt ratios up to 109.
- American Made.



## LW104 SERIES

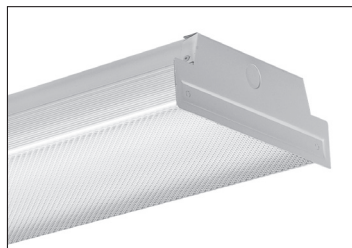
Fixture Type:

Job Information:

**ORDERING DATA:** Fill in boxes below with corresponding bold options.

Example: LW104-4-3300-35K-A-1%-UNI-EM7

SERIES	NOMINAL LENGTH (FT)	NOMINAL LUMENS	COLOR TEMP	DIFFUSER	DRIVER	VOLTAGE	OPTIONS
LW104	2 24" Length	24"L 2100	30K	A Clear Acrylic Prismatic	1% 0-10V 1% Dimming	UNI	Standby Modules EM7 EM10 EM12
	4 48" Length	3300	35K		As Specified		
	8 96" Length	5000	40K				
		6100	50K Upon Request				Lighting Controls 01 Leviton OSFHU or equal Occupancy Sensor, 360 Degree Lens Inst. Aisle Pattern Incl.
		48"L 3300					
		4200					
		5100					
		8700					
		96"L 8500					
		10000					
		17500					
		XXXX Custom Lumen Package. Contact Factory.					

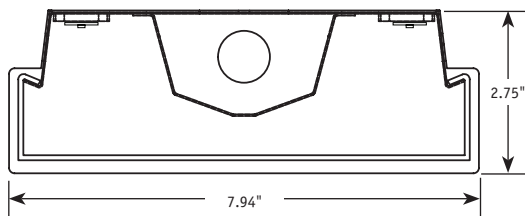


Detail

### PHOTOMETRICS:

All photometric reports are available at [www.merclt.com](http://www.merclt.com).

### CROSS SECTIONS:



### HANGING ACCESSORIES

PART #	DESCRIPTION	PART #	DESCRIPTION
R5PF-100	Round 5" power feed canopy, Hanging hardware, 100" long 1/16" cable.	VH-XX	"V" Hanger w/XX= 48"L or 72"L Chain & "S" Hook
R5-100	Round 5" canopy, Hanging hardware, 100" long 1/16" cable.	CPYS-1	S-1 Single Stem 5" Dia. Canopy
R2-100	Round 2" canopy, Hanging hardware, 100" long 1/16" cable.	STMXX	XX= 12"L, 24"L, 48"L Stem/ 3/8" IPS-5/8" OD
S5PF-100	Square 5" power feed canopy, Hanging hardware, 100" long 1/16" cable.	Other cable lengths available.	
S5-100	Square 5" canopy, Hanging hardware, 100" long 1/16" cable.		
S2-100	Square 5" power feed canopy, Hanging hardware, 100" long 1/16" cable.		

### LUMEN PACKAGE

SERIES	NOMINAL LENGTH (FT)	Nominal Lumen Package	Color	Fixture Power (W)	Diffuser	Delivered Lumens	Fixture LPW
LW104	2						
		2100	3000K	21	A	2017	95
		2100	3500K	21	A	2055	97
		2100	4000K	21	A	2127	100
		2100	5000K	21	A	2202	104
		3300	3000K	33	A	3194	97
		3300	3500K	33	A	3255	99
		3300	4000K	33	A	3369	102
		3300	5000K	33	A	3487	106
		5000	3000K	54	A	4723	88
		5000	3500K	54	A	4813	90
		5000	4000K	54	A	4982	93
		5000	5000K	54	A	5157	96
		6100	3000K	65	A	5820	89
		6100	3500K	65	A	5930	91
		6100	4000K	65	A	6139	94
		6100	5000K	65	A	6354	97

SERIES	NOMINAL LENGTH (FT)	Nominal Lumen Package	Color	Fixture Power (W)	Diffuser	Delivered Lumens	Fixture LPW
LW104	4						
		3300	3000K	32	A	3143	99
		3300	3500K	32	A	3203	101
		3300	4000K	32	A	3316	105
		3300	5000K	32	A	3432	109
		4200	3000K	42	A	4019	95
		4200	3500K	42	A	4095	97
		4200	4000K	42	A	4239	100
		4200	5000K	42	A	4387	104
		5100	3000K	54	A	4871	91
		5100	3500K	54	A	4964	92
		5100	4000K	54	A	5138	96
		5100	5000K	54	A	5318	99
		8700	3000K	91	A	8281	91
		8700	3500K	91	A	8438	93
		8700	4000K	91	A	8735	96
		8700	5000K	91	A	9041	100

SERIES	NOMINAL LENGTH (FT)	Nominal Lumen Package	Color	Fixture Power (W)	Diffuser	Delivered Lumens	Fixture LPW
LW104	8						
		8500	3000K	86	A	8134	95
		8500	3500K	86	A	8289	97
		8500	4000K	86	A	8580	100
		8500	5000K	86	A	8881	103
		10,000	3000K	105	A	9548	91
		10,000	3500K	105	A	9729	93
		10,000	4000K	105	A	10,072	96
		10,000	5000K	105	A	10,424	100
		17,500	3000K	181	A	16,562	91
		17,500	3500K	181	A	16,877	93
		17,500	4000K	181	A	17,471	96
		17,500	5000K	181	A	18,082	100

Actual wattage may differ by +/- 5% when operating between 120V-277V +/- 10%.

