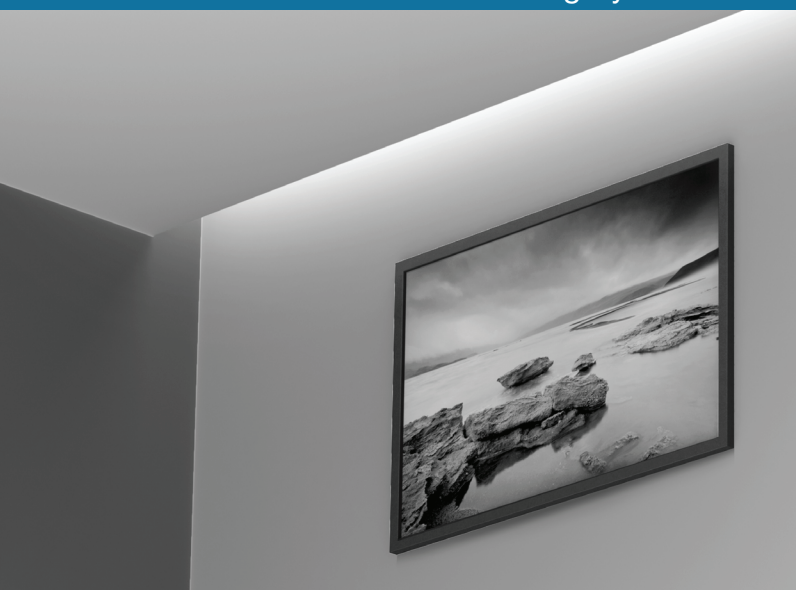


LIGHTPERIMETER

MLP3 SERIES

RECESSED PERIMETER LINEAR SYSTEM 1", 2" OR 3" DEEP REGRESSION

Architectural Linear LED Illuminating System | LIGHTPERIMETER



New Feature:

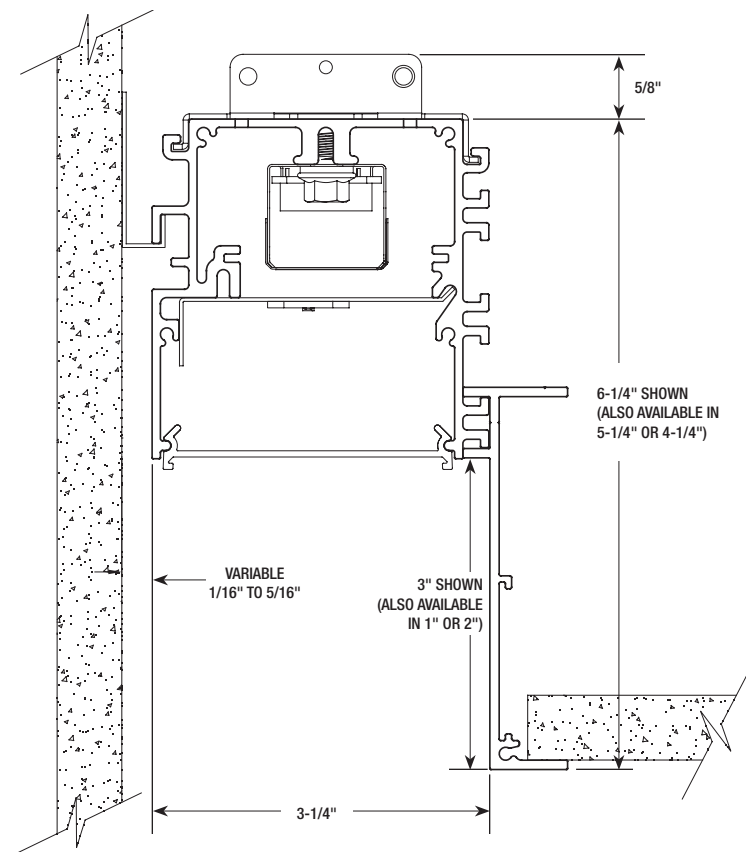
- Wall grazing lens: provides a very uniform graze of light from top to bottom which will highlight and bring out the wall texture.

Standard Features:

- Recessed perimeter linear system.
- Enhances and defines the perimeter of the ceiling while making a space feel bigger and brighter.
- Mounts against the wall and provides a defined floating edge to the ceiling.
- Housing regresses up into the ceiling; 1-, 2-, or 3-inches.
- Direct downlighting for wall grazing and general room illumination.
- Extruded aluminum housing for perfectly straight lines of light.
- Approximate 3-1/2" opening from ceiling to wall.
- Linear lengths; 2-ft. and above in increments of one-inch.
- Standard or wall grazing lenses are both custom formulated from high diffusion extruded acrylic.
- Non-glare matte-white polyester powder coating finish.
- Cataloged standard or custom set lumens-per-foot performances.
- 80 CRI standard. 90 CRI available.
- Dimming down to 1% on 0-10V controls.
- IC rated.
- Meets the requirements for Chicago Plenum use.
- Fixture lumens per watt ratios up to 92.
- Standard and custom corners
- American Made.



Cross Section

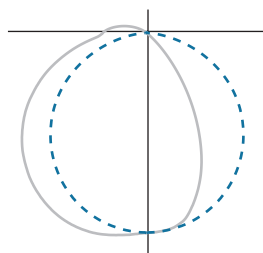


Performance

Based on 4Ft. Module, 3500K, 80 CRI, 3" Deep Regression

Lumens per Foot	Total Lumens (4Ft)	Color	System Watts (W)	Lumens per Watt (LPW)
400	1600	35K	17.4	92
500	2000	35K	21.7	92
625	2500	35K	27.6	91
850	3400	35K	39.1	87

Multiplier for other Color Temp (K)	
3000K	97%
3500K	100%
4000K	102%
5000K	103%



fixture type:

job information:

MLP3 Series | LIGHTPERIMETER

Architectural Linear LED Illuminating System | Recessed Perimeter Linear System | 1", 2" or 3" Deep Regression

Ex: MLP3-N5-3-96-850-35K-ASO-1%-U-EM12

Ex: MLP3-N5-3-96-850-35K-ASO-1%-U-EM12

MLP3										Option
Series	Mounting	Regression Depth	Module Length	Lumens/ Ft	Color Temp	Diffuser	Driver	Voltage	Standby Modules*	
MLP3 LightPerimeter	G Grid 9/16" or 15/16"	3 3" Regression Default Setting	48 48" Length	400	80 CRI	ASO Acrylic Smooth Opal	1% 0-10V 1% Dimming	U Uni 120V-277V	EM7	
	F Overlapping Flange Trim	2 2" Regression Optional Setting	96 96" Length	500 625 850						35K 40K
	N5 Trimless Plaster-In for 5/8" Drywall	1 1" Regression Optional Setting	Custom or Row Length. 24" and above in 1" Increments. Ex. in inches: 82, 384, etc.	Custom Lumen Package. Contact Factory	50K Upon Request	WG Wall Graze Frost	SR Sensor Ready (Required for Certain Controls, Contact Factory)	1 120V 7 277V	No Option	
					927K 930K 935K 940K					LDE1 Lutron Hi-Lume
					90 CRI		LDE5 Lutron 5-Series	X As Specified		
							As Specified			

*Available in modules of 4-ft. and longer. / Maximum 625 Lumens per foot packages.

Housings

Extruded aluminum profile in a 0.080-inch wall thickness.

Maximum length of each linear component is 8-ft.

18GA steel ends are provided where needed at row termini.

A one-piece 14GA galvanized steel joiner/aligner bracket is provided for each joint between housings.

Internal cold-rolled steel components.

Housing intended for recessing at the perimeter of drywall or grid type ceiling systems.

Wall side of housing mounts directly to the wall.

A custom formulated non-glare matte-white polyester powder coating provides an extremely durable and long-lasting finish.

Diffusers

Seamless fit diffusers. Flawless and consistent end-to-end fit.

ASO: standard lens extruded from custom formulated acrylic smooth opal material.

WG: wall graze lens extruded from frosted clear acrylic material.

LED Modules

High performance linear configured LED module boards.

Each board consists of multiple mid-power, high efficacy LEDs in a precise layout eliminating the need for supplemental heat sinking.

The boards produce an even and diffuse light which maximizes optical efficiency.

Compatible with the dimming performance of the LED driver.

Color temperatures available 80 CRI: 3000K, 3500K and 4000K. Upon request: 5000K.

Color temperatures available 90 CRI: 2700K, 3000K, 3500K and 4000K.

LED Drivers

Factory programmable constant current LED power supply.

Multiple standard drive current outputs (factory set by Mercury) are cataloged with their corresponding lumens-per-foot offering. Upon request, custom drive current outputs and lumens-per-foot options are available.

Note: Certain cataloged lumens-per-foot offerings may be provided with a non-programmable constant current LED power supply at Mercury's discretion. Contact factory if critical.

Universal voltage input, 120V-277V, 50HZ-60HZ.

Specification grade dimming down to 1% on 0-10V dimming controls.

Sensor ready (SR) drivers compatible with most lighting controls are optional. Consult factory.

Lutron drivers available: LDE1 and LDE5 series.

Standby Lighting Options

Self-contained module, 7W, 10W or 12W as specified. Battery backup upon loss of power. Available in modules of 4-ft. and longer. **(Limited to 625 Lumens per foot packages).**

Corners

Standard 90 degree corners for inside or outside turns.

Custom angled corners.

Installations

Designed for recessing at the perimeter of drywall or grid type ceiling systems.

Wall side of housing mounts easily on separate wall mounting bracket system.

Drywall ceiling options: Trimless housing (N5) for 5/8" drywall requires plastering-in by others after installation. Overlapping flange trim (F) neatly closes off drywall opening. Note: For all drywall installations, fixtures must be installed prior to ceiling.

Grid ceiling option (G): flange sits on grid system, or tiles and cross tees can rest on flange.

Ceiling side of N5 housing must be supported by threaded rod by others.

Ceiling side of F or G housings must be supported by either wire supports or threaded rod by others.

Lengths of 8-ft. and less to use one housing with two ends pre-installed.

Lengths over 8-ft. will be engineered to job requirements using multiple housings with one end pre-installed at each row end.

Lengths over 8-ft. will include appropriate job required quick-connect plug-thru wire harnesses and housing joiners.

Certificate of Safety Compliance and Listings

Luminaire: UL and CUL listed 1598 and bears their label. Suitable for damp locations.

IC rated.

Meets the City of Chicago Environmental Air (CCEA) specifications.

Warranty

5-year limited warranty is standard. Special 10-year warranty available on a job-to-job basis. Complete LED warranty terms available at www.mercltg.com.

Actual performance may differ as a result of end-user environment and application.

Most LED luminaires are suitable to operate in ambient temperatures from -20C (-4F) to 25C (77F).

The following exclusions apply: Luminaires with optional standby lighting option, integral lighting controls options, or wireless control options. Consult factory.

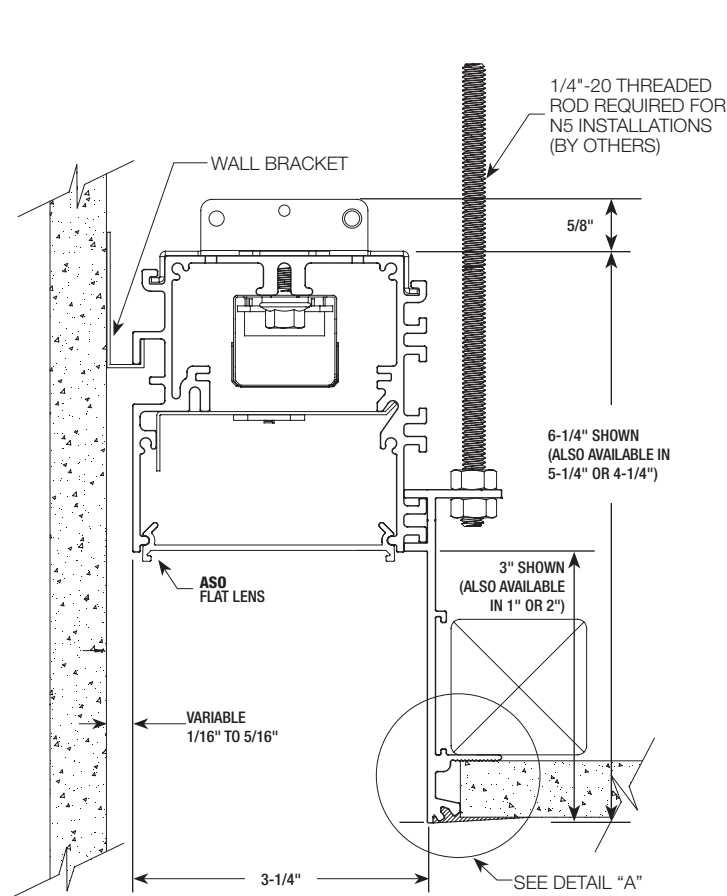
LM-79 testing was measured under a controlled 25C (77F) ambient operating temperature.



MLP3 Series | LIGHTPERIMETER

Architectural Linear LED Illuminating System | Recessed Perimeter Linear System | 1", 2" or 3" Deep Regression

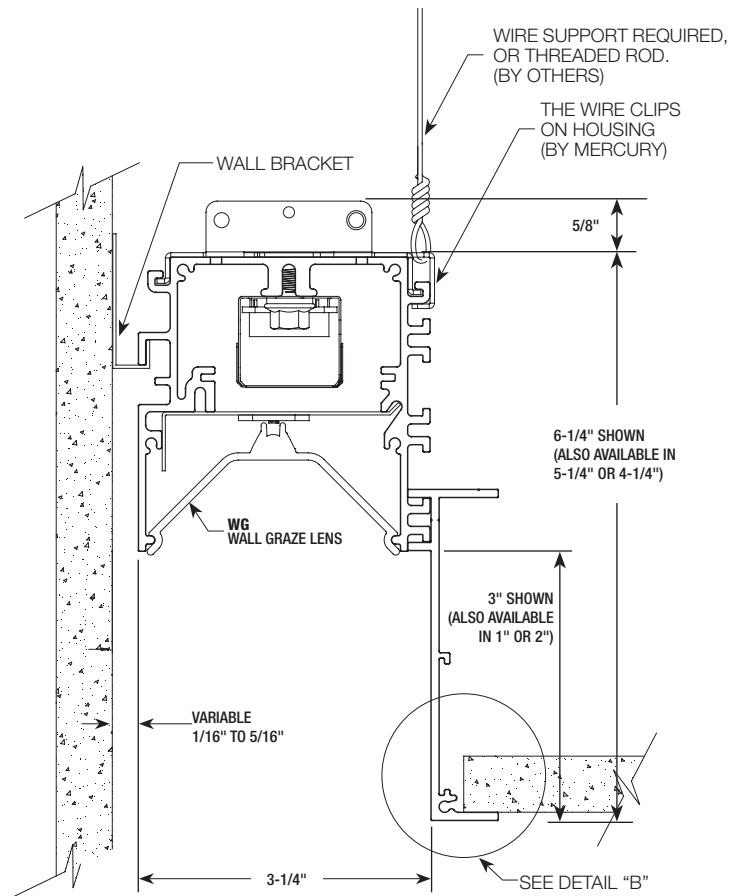
Ceiling Types and Dimensions



N5

Trimless Plaster-In for 5/8" Drywall
(REQUIRES PLASTERING-IN AFTER INSTALLATION BY OTHERS)

Shown with **ASO** standard flat lens.
Available with **WG** wall graze lens.



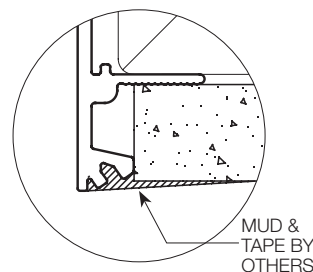
G Grid 9/16" or 15/16"

OR

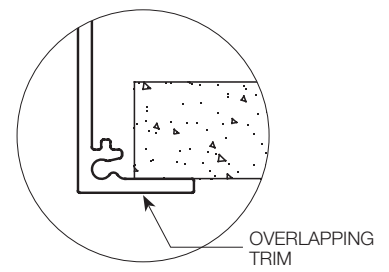
F Overlapping Flange Trim

Shown with **WG** wall graze lens.
Available with **ASO** standard flat lens.

NOTE: Fixture must be installed prior to ceiling in all drywall applications (N5 and F).



DETAIL "A"



DETAIL "B"

